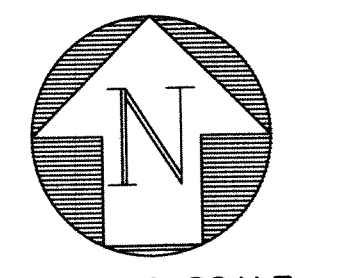


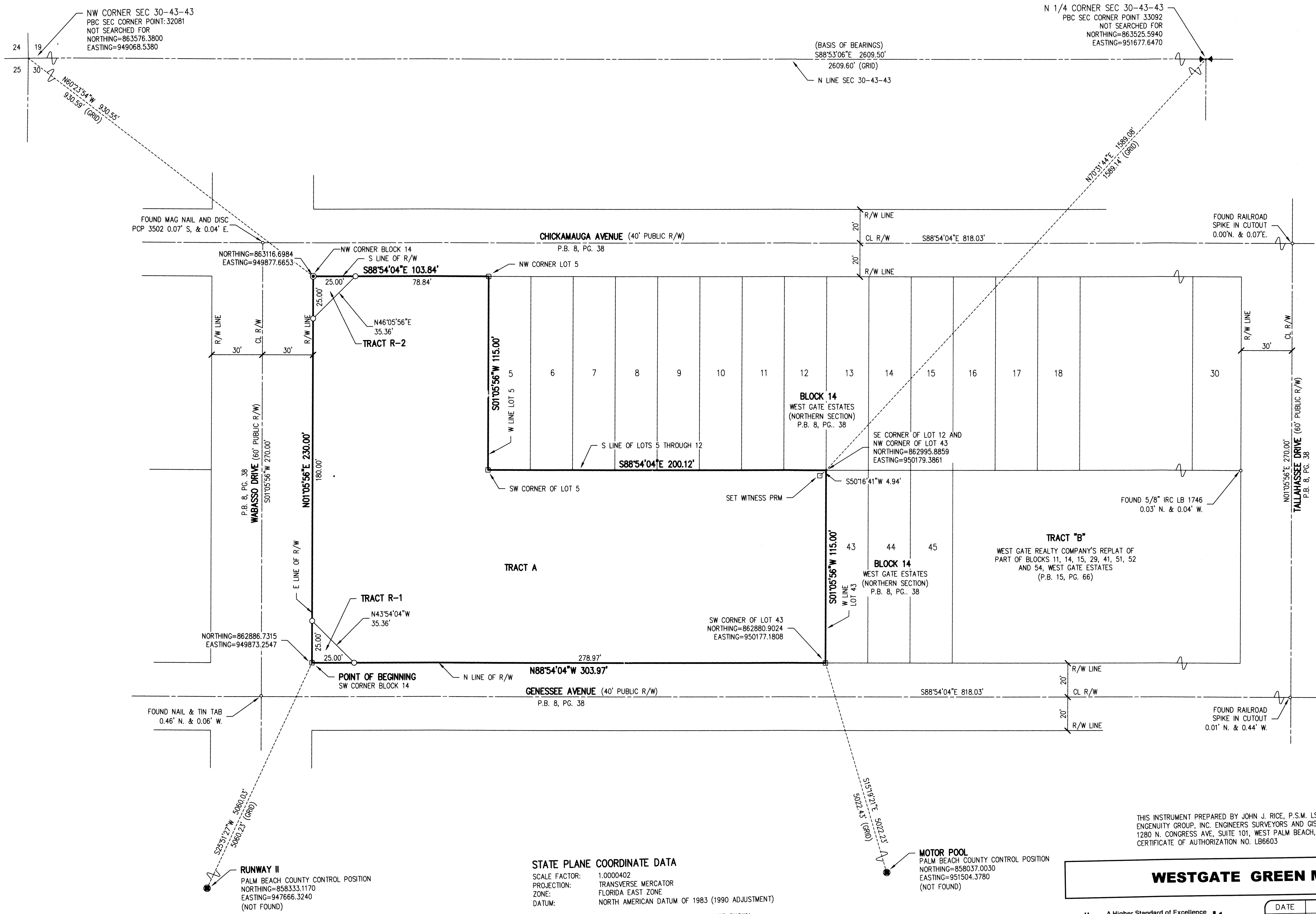
WESTGATE GREEN MARKET

A SUBDIVISION IN SECTION 30, TOWNSHIP 43 SOUTH, RANGE 43 EAST, PALM BEACH COUNTY, FLORIDA,
BEING A REPLAT OF LOTS 1, 2, 3, 4 AND 31 THROUGH 42 INCLUSIVE, BLOCK 14, WEST GATE ESTATES
(NORTHERN SECTION), PLAT BOOK 8, PAGE 38, PUBLIC RECORDS OF PALM BEACH COUNTY, FLORIDA.

32



GRAPHIC SCALE
0 30' 45' 60'
SCALE: 1" = 30'



Y:\Land Projects R2\14162.01.11 COMMUNITY GARDEN AND GREEN MARKET.dwg\14162.01.11-Plot Bndy Rev.dwg 10/4/2021 1:02:04 PM EDT

- ABBREVIATIONS**
- CL - CENTERLINE
 - LB - LICENSED BUSINESS
 - P.B. - PLAT BOOK
 - PBC - PALM BEACH COUNTY
 - PG. - PAGE
 - R/W - RIGHT-OF-WAY
- LEGEND**
- SET PERMANENT REFERENCE MONUMENT
4" x 4" CONCRETE MONUMENT WITH DISK
STAMPED LB #6603
 - SET PERMANENT REFERENCE MONUMENT
MAG NAIL WITH DISK STAMPED LB #6603
 - SET 5/8" IRON ROD & CAP LB #6603

STATE PLANE COORDINATE DATA
SCALE FACTOR: 1.0000402
PROJECTION: TRANSVERSE MERCATOR
ZONE: FLORIDA EAST ZONE
DATUM: NORTH AMERICAN DATUM OF 1983 (1990 ADJUSTMENT)

ALL DISTANCES ARE GROUND DISTANCES UNLESS OTHERWISE SHOWN.
GROUND DISTANCE X SCALE FACTOR = GRID DISTANCE
LINEAR UNITS = US SURVEY FEET

THIS INSTRUMENT PREPARED BY JOHN J. RICE, P.S.M. LS4506 STATE OF FLORIDA.
ENGENUITY GROUP, INC. ENGINEERS SURVEYORS AND GIS MAPPERS
1280 N. CONGRESS AVE., SUITE 101, WEST PALM BEACH, FLORIDA 33409.
CERTIFICATE OF AUTHORIZATION NO. LB6603

WESTGATE GREEN MARKET

engenuity
group inc.
ENGINEERS • SURVEYORS • GIS MAPPERS

1201 BELVEDERE ROAD, WEST PALM BEACH, FLORIDA 33405
PH (561) 655-1151 • FAX (561) 832-9390
WWW.ENGENUITYGROUP.COM

DATE	05/02/18
SCALE	1" = 30'
CAD FILE	14162.01.11
SOSK PROJECT	14162.01
DRAWN	J. RICE
CHECKED	J. MALIN

S
H
E
E
T

2/2

JOB NO.
14162.01.11